

ErUM-Data-Hub

The **ErUM*-Data-Hub** is the central networking and transfer office for the digital transformation in research on universe and matter (German abbreviation for ***ER**forschung von **U**niversum & **M**aterie).

In Germany, research on universe and matter is organized in 8 ErUM-communities: KAT, KET, KfB, KFN, KFS, KFSI, KHUK and RdS.



The key goals of the ErUM-Data-Hub are to promote networking, intensify exchange, expand digital competencies and further enhance communication within the ErUM-Data Community and with the interested public.

LHC-ErUM-FSP Office

The **LHC ErUM-FSP Office** is a joint communication and transfer project office. It was initiated by German universities & scientific institutes that participate in the 4 big LHC experiments and collaborations ALICE, ATLAS, CMS and LHCb at CERN. In Germany these collaborations are organized in so called FSPs, which stands for research focus.

The office coordinates and organizes the joint outreach and industry transfer efforts of these FSPs and its more than 1300 scientists in 29 institutes in Germany.



With joint forces we establish and enhance awareness by extending the outreach of ErUM-Research and show the importance of exploring Universe and Matter.

How?

ErUM-Scientists & Research



Broad Public & Industry

Joint Stand at Hannover Messe 2023 & 2024

260.000 visitors from 70 countries 4.000 exhibitors



Lively discussions with a broad public contribute to extend the outreach of ErUM-Research



Inform the public about (current) ErUM-Research



Inform about the daily work life of ErUM-Scientists at German institutes and their research of fundamental principles of Universe and Matter



Establish contacts with industry representatives and identify interfaces for the transfer of knowledge and technologies into the economy



Understanding the world with Big Data

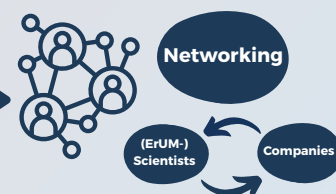


Transfer Workshop: ErUM-Scientists & Industry in Dialogue 2025

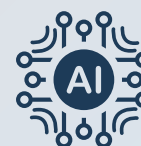
Knowledge Exchange & Networking



This workshop format aims to support the transfer of the resulting knowledge from ErUM-Research to industry



The focus is on the latest technologies (software and algorithms with the main emphasis on artificial intelligence)



Long Term Goals

- carry out joint projects
- identify synergies
- provide job opportunities